



Friday, November 01, 2013

Juaquana Brookins
USC Facilities
743 Greene Street
Columbia, SC 29208

Re: Addendum #1
Blossom Street Concrete Median & Fencing
D&F Job Number: 13142.01

Dear Ms. Brookins:

Please add the following pay items and notes to Addendum #1:

6271015	8" White Solid Line Thermo 125 Mil	90	LF
6510105	Flat Sheet, Type III fixed Size	18	SF
6531205	U-Section Post for Signs – 2P	40	LF
7209000	Pedestrian Ramp Construction	32	SY (Std Dwg 720-952-11)
7204900	Detectable Warning Surface	10	SF

The Gadsen Street crosswalk on the south side of Blossom Street will be restriped.

Flat Sheet signs OM2-2V will be attached to line post on fence at the Gadsen/Blossom Street intersection to provide additional reflectivity within the median to ensure motorists traveling Gadsen Street do not attempt to cross.

OM-3C signs will be placed at each end of the new fence and placed on u-section post (2P).

The pedestrian ramp in the southwest quadrant of the Gadsen/Blossom Street intersection will be improved to current standards per SCDOT Standard Drawing 720-952-11 (downhill side ramp).

The concrete median shall be installed based on SCDOT Standard Drawing 720-105-03 (surface applied detail 8).

The raised pavement markers shall be installed per SCDOT Standard Drawing 630-215-00.

Night time lane closures are from 8PM to 6AM per note 4 on sheet TC1.

Holiday work restrictions include extended Holiday schedules the week of Thanksgiving and the week before & after Christmas. Final determination would be determined by the SCDOT RCE. See section 601.1.1 of the SCDOT Standard Specifications for inquiry deadlines regarding work restrictions.

Engineering | Architecture | Environmental | Laboratory

240 Stoneridge Drive, Suite 305 Columbia, SC 29210 [803] 256 4121

davisfloyd.com

The latest Fence detail sheet S1 and SCDOT Standard drawings are attached.

Very truly yours,

DAVIS & FLOYD, INC.

Eric Dickey, PE, PLS
Vice President

University of South Carolina Pre Bid Sign In Sheet

Columbia, South Carolina

Project Name:

Blossom Street Concrete Medians and Fencing

Project Number:

H27-Z111

Pre Bid Date & Time:

October 31, 2013 @ 10am

Name	Company Name	Address	Phone #	Email
Jared Baker	Capitol Construction of the Carolinas	704 Ramsgate Dr Spartanburg SC	804-809-7628 804-941-1407	jared@capitolconstruction.us bids@capitolconstruction.us
JAMES Gregory	Cherokee Inc	6928 Cherokee St Columbia SC 29209	803-776 4870	jgregory@cherokee-sc.com
Jason Rouse	Hammer Construction	785 Hammer Creek Way Columbia, 29209	803-785-7055	jason@hammerconstructioncompany.com
Luke Uikes	AOS Specialty Contr.	575 Two Notch Road, Lexington SC 29023	803-675-4827	luke@aossc.org
MIKE SUGATT	AOS specialty contr	575 Two Notch Rd., Lexington, SC 29023	803-798-6571	mike@aossc.org
Ulagana Brookins	USC	743 Greene St Columbia SC	803. 771.3596	jbrookin@fine.sc.edu

*Please make sure you list your company name as registered with LTR.
* By signing and providing your email address, you are authorizing the University of South Carolina to send you information electronically.

SCALE: 0.6592 ' / in.

PLOT DRIVER: CRM-RW-Road-Ricoh-2.plt

PLOTTED: 10/3/2013

PEN TABLE: V8-12.tbl

FILE: J:\Jobseven\13142-01CV\F_DGN\PLPR\S1.dgn

CONSTRUCTION PLANS

FED. ROAD DIV. NO.	STATE	COUNTY	ROUTE NO.	SHEET NO.	TOTAL SHEETS
3	S.C.	RICHLAND	US-21 CON	S1	

FOR INFORMATION ONLY

UNIVERSITY OF SOUTH CAROLINA

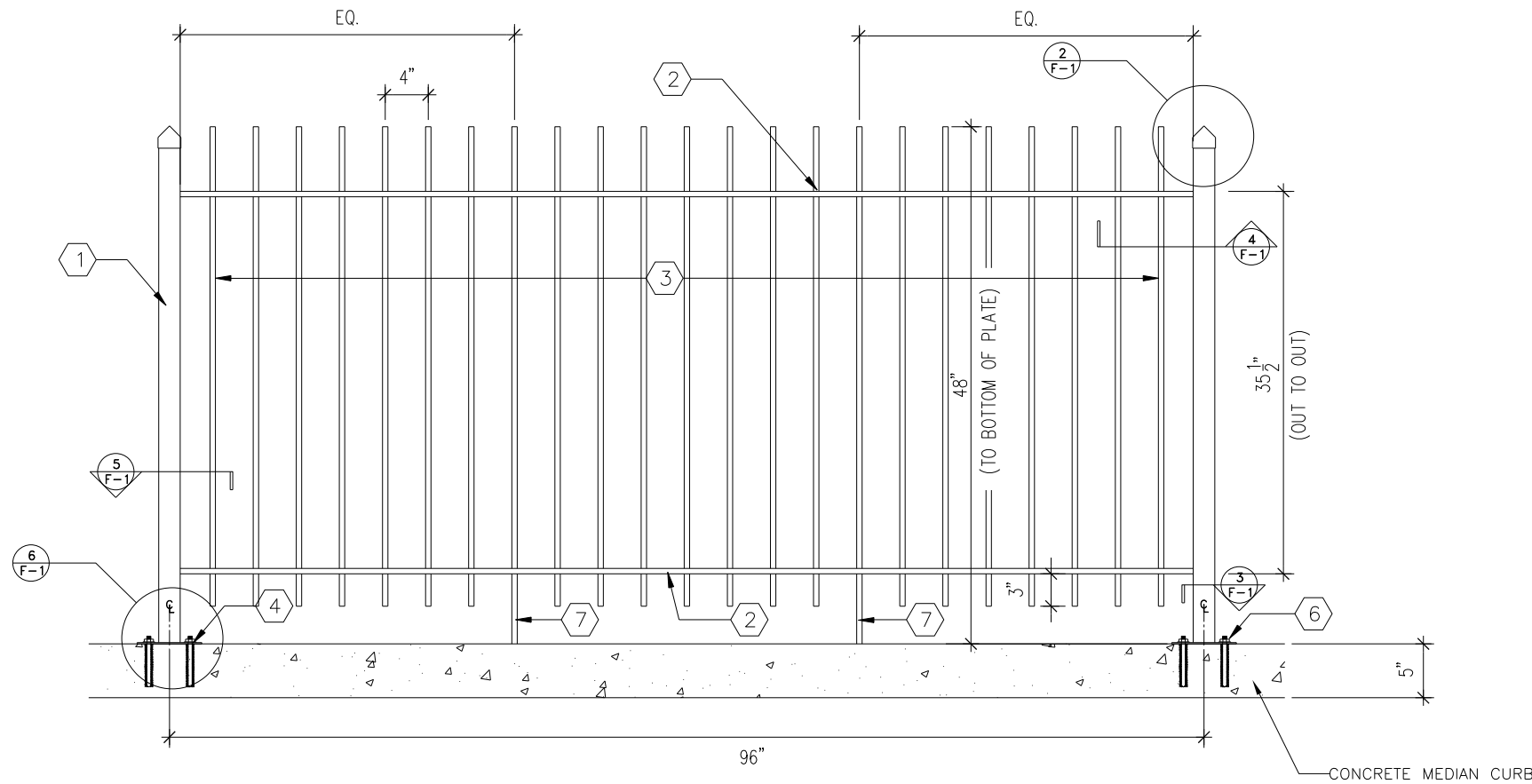
FENCE DETAIL SHEET
BLOSSOM ST

GENERAL NOTES :

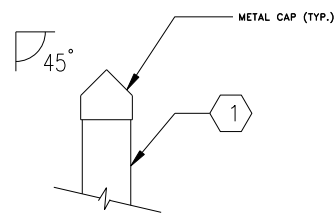
- ALL MEMBERS ARE TO BE A36 STEEL.
- ALL STEEL MEMBERS ARE TO BE POWDER-COATED WITH A BLACK SATIN FINISH.
- FENCE SLOPE DEPENDS ON ROAD/MEDIAN GRADE.
- CONTRACTOR TO PROVIDE SHOP DRAWING FOR APPROVAL.
- CONTRACTOR TO SUPPLY SHOP DRAWING BY REGISTERED SC PROFESSIONAL ENGINEER.

FENCING NOTES :

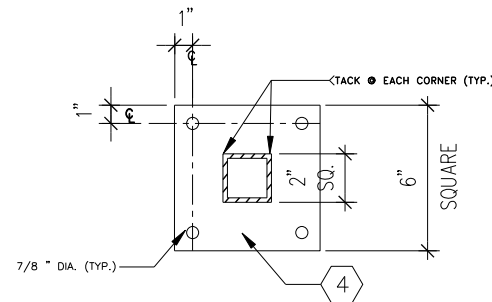
- 2" SQUARE STEEL TUBE LINE POST W/ CAP (TYPICAL).
- 1 1/2" X 1/2" 1/8" TOP AND BOTTOM STEEL CHANNEL (TYPICAL).
- 1/2" X 1/2" SQUARE STEEL BAR PICKET - 46" LONG 4" ϕ TO ϕ (TYPICAL).
- 6" X 6" X 1/4" STEEL PLATE - SEE DETAIL 3/F-1 AND 6/F-1.
- PUNCH 9/16" SQUARE HOLE IN TOP AND BOTTOM CHANNEL FOR PICKETS.
- 3/4" X 5 1/2" ANCHOR BOLT (TYP.) WITH LOCKER WASHERS AND NUT;
CORE DRILL & SET WITH NON-SHRINK EPOXY GROUT.
- EXTEND PICKET TO REST ON CONCRETE CURB FOR INTERIM CHANNEL SUPPORT.



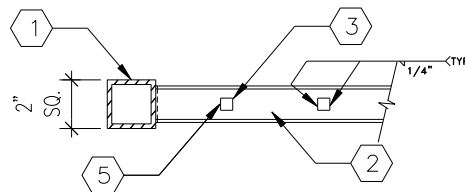
1
F-1
TYPICAL FENCE SECTION ELEVATION
SCALE: 1 1/2" = 1' -0"



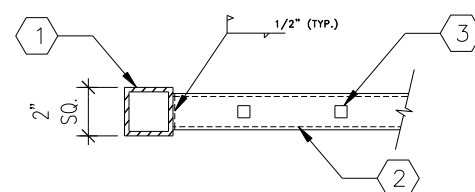
2
F-1
LINE POST TOP DETAIL
SCALE: 3" = 1' -0"



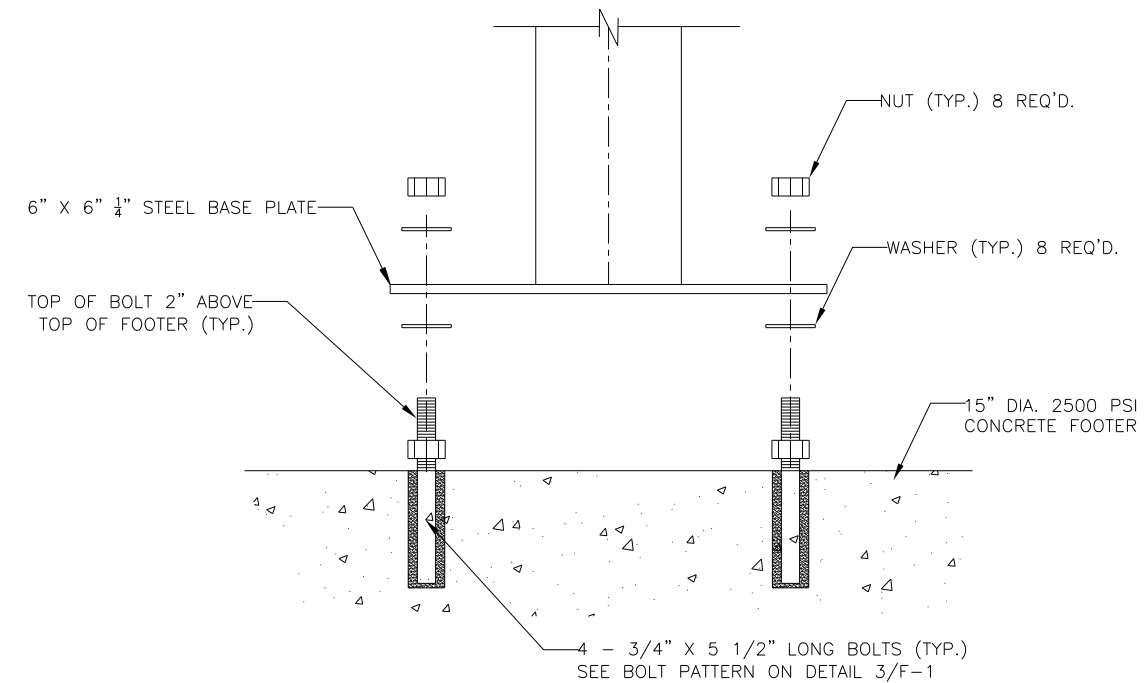
3
F-1
STEEL PLATE DETAIL
SCALE: 3" = 1' -0"



4
F-1
TOP/BOTTOM CHANNEL DETAIL
SCALE: 3" = 1' -0"



5
F-1
CONNECTION AT LINE POST
SCALE: 3" = 1' -0"



6
F-1
CONNECTION AT STEEL PLATE & FOOTER DETAIL
SCALE: HALF FULL SIZE

NOTE: PROVIDE GROUT INFILL AS REQUIRED AT TOP OF FOOTER WHERE BASE PLATE IS ADJUSTED TO EXISTING SITE CONDITIONS.

240 STONERIDGE DRIVE,
SUITE 300
COLUMBIA, SC 29210
(803) 256-4121

DAVIS Engineering
Architecture
FLOYD Environmental & Laboratory Services
GREENWOOD • CHARLESTON • COLUMBIA • GREENVILLE
FLORENCE • HICKORY, NC

REV. NO.	DATE	DESCRIPTION OF REVISION
4		
3		
2		
1		

BY	DATE
DN	
R/W	
CHK.	

NATIONAL DOCUMENTS

1101

150-205-00
720-105-01
720-905-02

A circular professional engineer seal for the State of South Carolina. The outer ring contains the text "SOUTH CAROLINA" at the top and "JAMES W. KENDALL, JR." at the bottom. The inner ring contains the text "REGISTERED PROFESSIONAL ENGINEER". In the center, the number "NO. 21242" is displayed. The seal is surrounded by a decorative border of small dots.

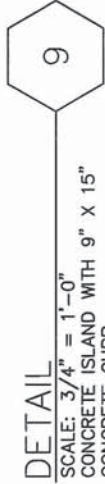
9-27-12
DATE

SCDOT
SOUTH CAROLINA DEPARTMENT OF TRANSPORTATION
DESIGN STANDARDS OFFICE
955 PARK STREET
ROOM 405
COLUMBIA, SC 29201

CURB & GUTTER
(CONCRETE ISLANDS)

EFFECTIVE LETTING DATE	JANUARY, 2013
------------------------	---------------

NOTES:



CONCRETE ISLAND / MEDIAN PAVEMENT MARKER PLACEMENT

DISTANCE BETWEEN RAISED PAVEMENT MARKERS

ISLAND LENGTH	APPROACH & INTERMEDIATE	TRAILING END
** 40	--	40
* 45	25	20
* 50	25	25
* 55	25	30
* 60	25	35
* 65	25	40
* 70	25	40
75	25	20
80	25	25
85	25	30
90	25	35
95	25	40
100	25	20
105	25	25
110	25	30
115	25	35
120	25	40
125	25	20
130	25	25
135	25	30
140	25	35
145	25	40
150	25	20

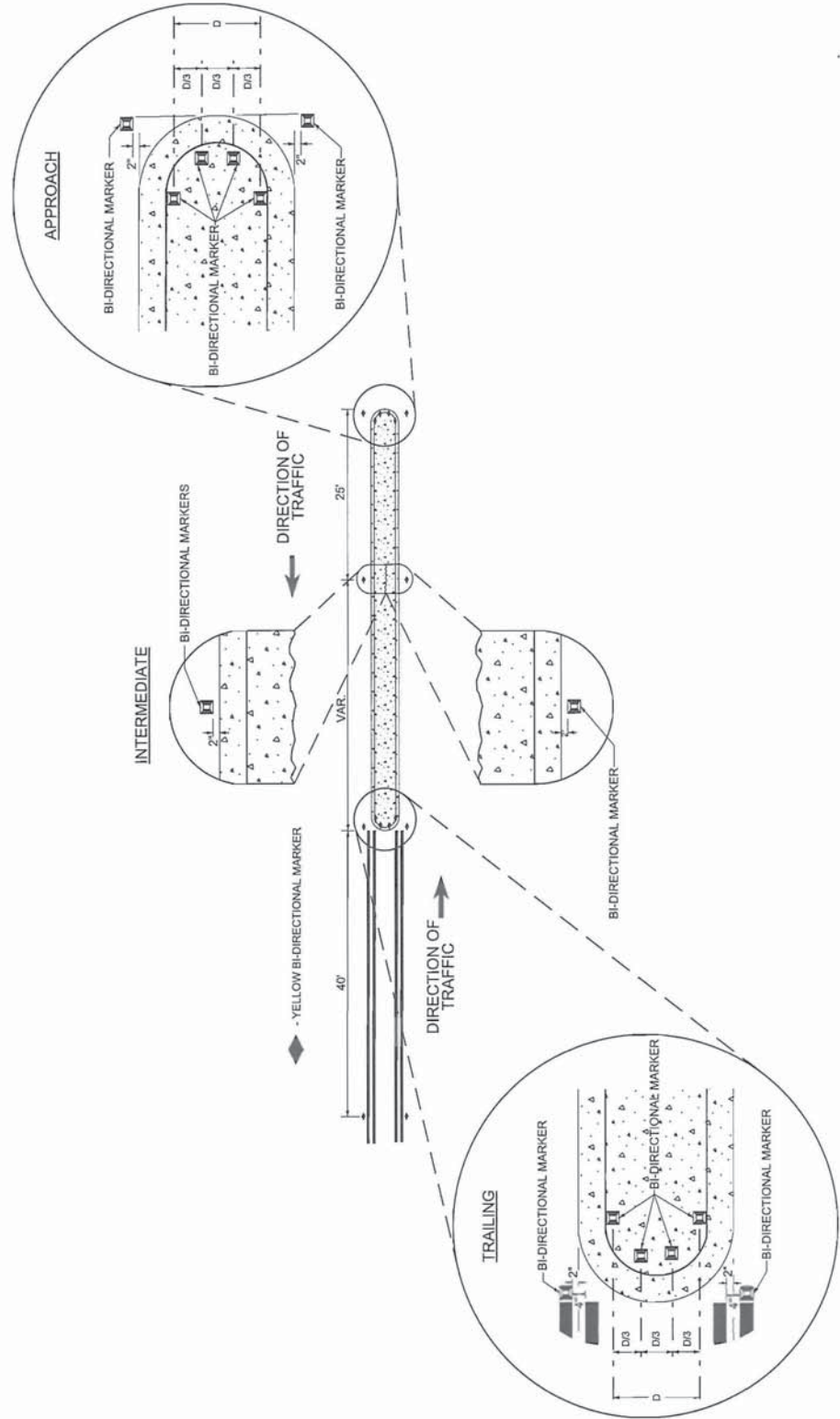
** CONCRETE ISLAND NOT SUPPLEMENTED WITH INTERMEDIATE RAISED PAVEMENT MARKERS

* CONCRETE ISLAND SUPPLEMENTED WITH ONLY ONE PAIR OF INTERMEDIATE RAISED PAVEMENT MARKERS

NOTES:

1) EACH END OF A CONCRETE ISLAND SHALL BE SUPPLEMENTED WITH RAISED PAVEMENT MARKERS.

2) RAISED PAVEMENT MARKERS SUPPLEMENTAL TO CONCRETE ISLANDS WILL BE INSTALLED AS SHOWN. VARIABLE SPACINGS SHALL NOT BE APPLIED TO AN APPROACH END OF AN ISLAND.



CONCRETE ISLAND / MEDIAN PAINTING



REFERENCES

SIGNING AND MARKING ENGINEER

REGISTERED PROFESSIONAL ENGINEER

NO. 23845

MARK H. ANTHONY

10-6-10

SIGNATURE

DATE

6

5

4

3

2

1

0

#

DATE

CHK

DESCRIPTION

SCDOT

SOUTH CAROLINA DEPARTMENT OF TRANSPORTATION

DESIGN STANDARDS OFFICE

955 PARK STREET

ROOM 405

COLUMBIA, SC 29201

STANDARD DRAWING

PAVEMENT MARKING TYPICAL

CONCRETE ISLAND / MEDIAN PAINTING

AND

RAISED PAVEMENT MARKER PLACEMENT

630-215-00

EFFECTIVE LETTING DATE

JANUARY 2011